

QSE 2000 Risk Manager software 4.000 – Software Update Instructions

Before starting this update you should have

- Downloaded the installation to your desktop from the email.
- Note the cases sensitive password for the installation from the email.
- DO NOT UNINSTALL THE PREVIOUS VERSION! Note the installation folder where your current software is installed and you will install over the last version. It is essential to install over the current version otherwise you will lose data. You can check where this is by right clicking over the shortcut you use for starting QSE and checking in properties/shortcut tab.

Installing the update

1. Run the installation file you downloaded and select **Yes** to install.
2. When asked, key the **password** (supplied in the email) then press **OK**.
3. Welcome window - press **Next**.
4. License Window - press **Yes** if you agree to the license.
5. Destination window - press **Browse** and use the drives and directories to navigate to where your current QSE is installed then **double click** the required directory entry then press **OK**. Check the destination and if correct press **Next**.

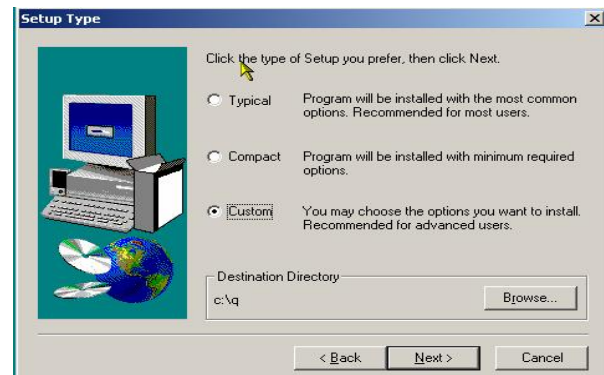
6. At Setup Type window – select **Custom** then **Next**.

NOTE:

Typical: installs all components: program, graphing, system and file maintenance.

Compact: installs program and graphing.

Custom: allows selected components to install.



7. At Select Components window

check ON

- **QSE Program** – updates application

- **TPSFix** – updates file maintenance module

check OFF

(unless this is the first install)

- **OLE Support files** only

- **Graphics server** files

then press **Next**.



8. At Select Program Folder window press **Next**.
9. At Start Copying Files window press **Next**.
10. After installation press **Finished**. Start QSE in the normal fashion.